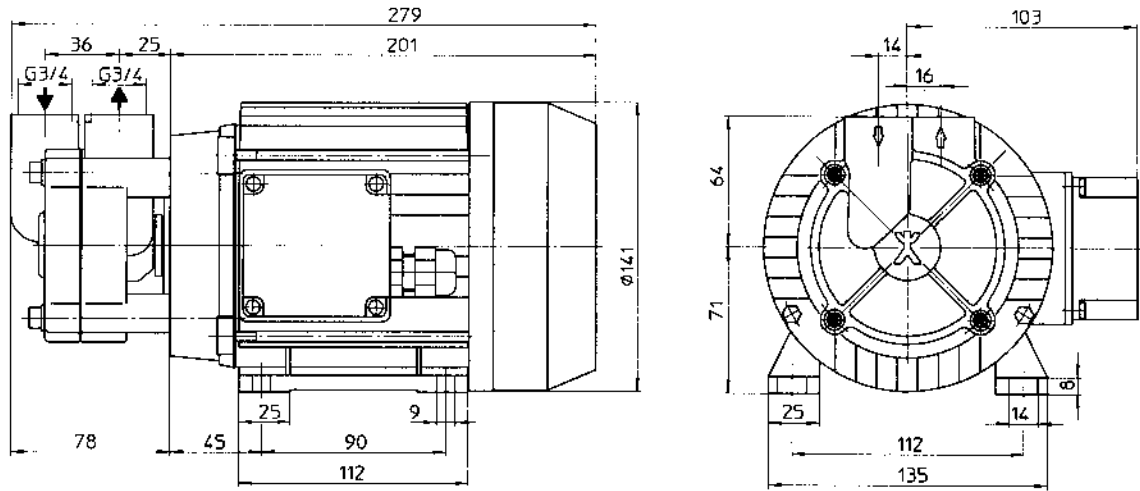
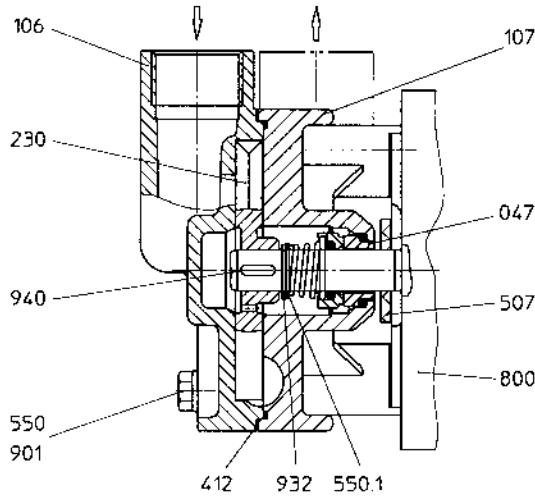


**Kleinkreiselpumpe
DY-028
selbstansaugend**

**small centrifugal pump
DY-028
self priming**



Weilendichtung:	Gleitringdichtung		shaft sealing:	mechanical seal	
Werkstoffe:	Sauggehäuse	CuZn	materials:	suction casing	brass
	Druckgehäuse	CuZn		discharge casing	brass
	Laufrad	CuZn		impeller	brass
Anschlüsse:	G 3/4		connections:	G 3/4	
Motor:	1,0 kW; Drehstrommotor; 2800/3400 1/min;		motor:	1.3 HP; three-phase motor; 2800/3400 rpm	
Gewicht:	9,8 kg		weight:	21 lbs	



- | | | |
|-------|-------------------|------------------------|
| 047 | Gleitringdichtung | mechanical seal |
| 106 | Sauggehäuse | suction casing |
| 107 | Druckgehäuse | discharge casing |
| 230 | Laufrad | impeller |
| 412 | Runddichtring | O-ring |
| 507 | Spritzring | split ring |
| 550 | Scheibe | disk |
| 550.1 | Scheibe | disk |
| 800 | Motor | motor |
| 901 | 6-kt. Schraube | hexagon head cap screw |
| 932 | Sicherungsring | locking ring |
| 940 | Passfeder | feather key |
| 970 | Typenschild | name plate |

